

**Specification**

Insulator Material: High Temp. Thermoplastic, UL94V-0.  
 Contact Material:  $\Delta$  3 High Conductivity Copper  
 Board Lock Material: Brass  
 Contact Plating: Au on Contact Area  
 Sn (100 $\mu$ " Min.) on Solder Tail  
 Nickel (Contact - 80 $\mu$ " Min. / Solder Tail - 50 $\mu$ " Min.)  
 Sn(100 $\mu$ " Min.) over Nickel (40 $\mu$ " Min.)  
 Board Lock Plating:  $\Delta$  3 5A Max.  
 Current Rating: 25 Milliohms Max.  
 Contact Resistance: 1000 Megohms Min.  
 Insulator Resistance: 500V AC for 1 Minute  
 Dielectric Withstanding: -55°C ~ +125°C  
 Operating Temperature: 230°C for 30~60 seconds  
 Max. Processing Temp.: 260°C for 10 seconds

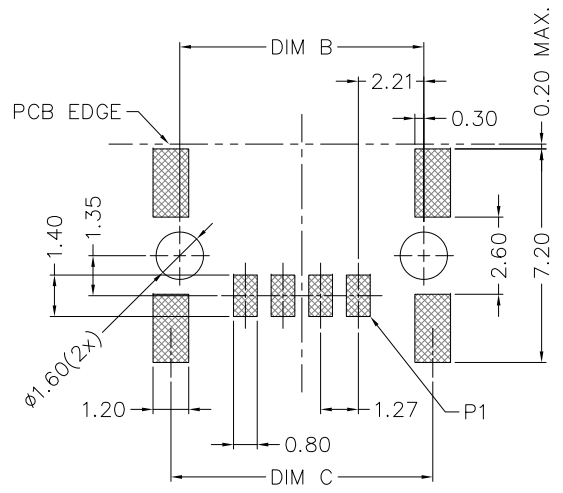
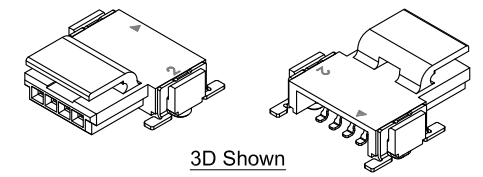
< ORDERING INFORMATION >

**SMC05 XX XXX 3**

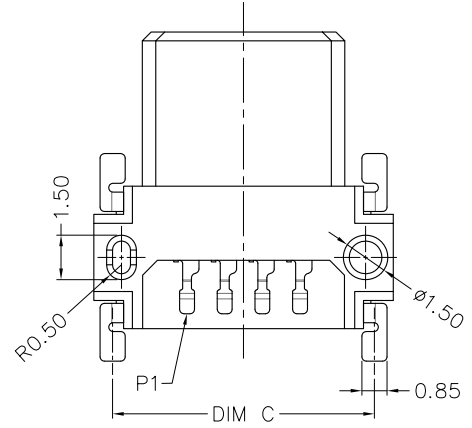
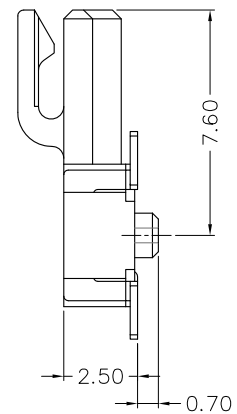
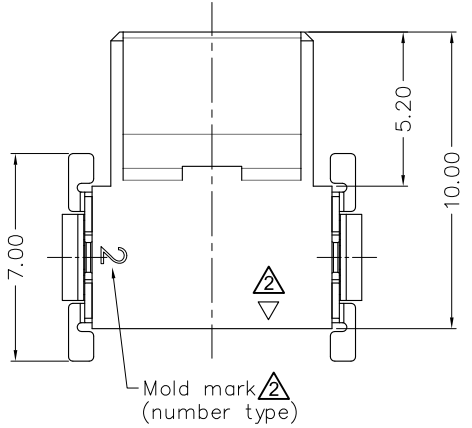
**SERIES NO.** 1.27 SMC Female Connector  
 Single Row R/A SMT Type  
**PACKAGE** 3: Tape & Reel  
**CONTACT POSITION** See DIM-TABLE  
**CONTACT PLATING**  
 600: Selective Gold Flash Plated (1 $\mu$ " Min.)  
 605: 5 $\mu$ " selective Gold Plated  
 630: 30 $\mu$ " selective Gold Plated

**DIM-TABLE**

PIN NO.	DIM A	DIM B	DIM C	DIM D
02	7.56	5.69	6.29	4.3
03	8.83	6.96	7.56	5.6
04	10.10	8.23	8.83	6.0
06	12.64	10.77	11.37	
08	15.18	13.31	13.91	
10	17.72	15.85	16.45	
12	20.26	18.39	18.99	



**RECOMENDED PCB LAYOUT**  
 TOLERANCE:±0.05



REV.	DESCRIPTION	DATE
$\Delta$ 3	Change Contacts Material	2020,05,04
$\Delta$ 2	Revision icon	2019,09,02
$\Delta$ 1	New Version	2019,05,08
DR. Shun	CHK. Ren	APP. Peter

UNITS: MM  
 TOLERANCE (UNLESS SPECIFIED)  
 0.0 ±0.35  
 0.00 ±0.20  
 0.000 ±0.10  
 ANG. ±2°



TITLE:  
**1.27 SMC Female Connector**  
 Single Row Right Angle SMT Type

DWG NO. SMC05_P	SHEET 1 / 1
FILE PATH SMC\1.27\SMC05\SMC05-XX_P3	REV. 3