

**CUSTOMER DRAWING**

REV.	DESCRIPTION	DATE	DRAWN	CHECKED	APPROVED
A	NEW VERSION	11-NOV-08	Denice	Deming	Peter

**ORDERING INFORMATION**

**SAR43 A 22 G6F1 1**

① ② ③ ④ ⑤

① **PRODUCT SERIES**  
SATA 7+15P RECEPTACLE  
5.0H R/A REVERSE SMT TYPE

② **MATING HEIGHT**

A: PCB=1.6mm(t)

③ **NUMBER OF CONTACTS**

22P

④ **CONTACT PLATING**

G6F1: GOLD(15u") PLATING ON CONTACT AREA  
MATTE-TIN (100u") ON SOLDER AREA  
NICKEL (50u") UNDERPLATED OVER ALL.  
(LEAD FREE UNDER 90 PPM)

⑤ **PACKING METHOD**

1: TRAY

**PERFORMANCE CHARACTERISTICS**

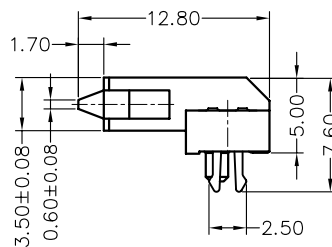
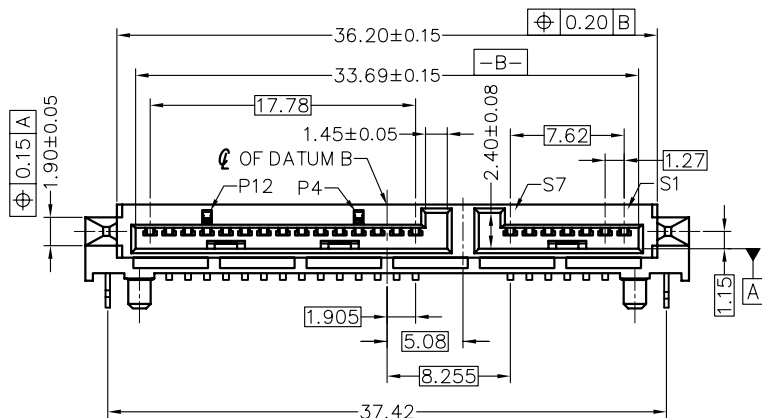
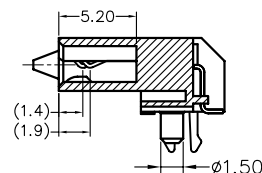
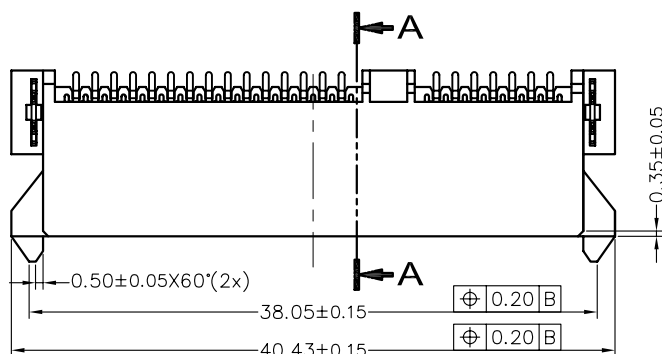
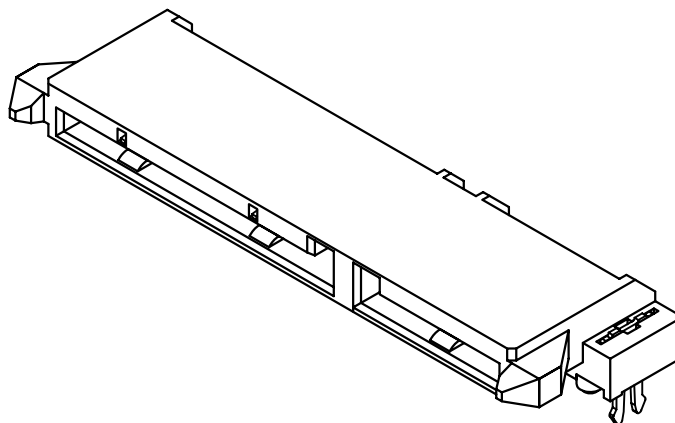
OPERATING VOLTAGE: 15V DC MAX.  
CURRENT RATING: 1.5 A MAX.  
CONTACT RESISTANCE: 30 mΩ MAX.  
INSULATION RESISTANCE: 1000 MΩ MIN.  
DIELECTRIC WITHSTANDING VOLTAGE: 500V AC/MINUTE  
OPERATING TEMPERATURE: -45°C TO +85°C

**MATERIALS**

HOUSING: HIGH TEMPERATURE THERMOPLASTIC,  
UL94V-0 RATDE  
HOUSING COLOR: BLACK  
CONTACT: PHOSPHOR BRONZE  
BOARD LOCK: BRASS

**MATERIALS**

CONTACT: SEE ORDERING INFORMATION  
BOARD LOCK: MATTE-TIN (100u" MIN.)  
NICKEL (50u"MIN) UNDERPLATED OVER ALL.



(POWER MATING PORT P4 & P12 FOR GROUNDING)

	TOLERANCE
	(UNLESS SPECIFIED)
	0.0 ±0.35
	0.00 ±0.20
UNITS: MM	0.000 ±0.XX

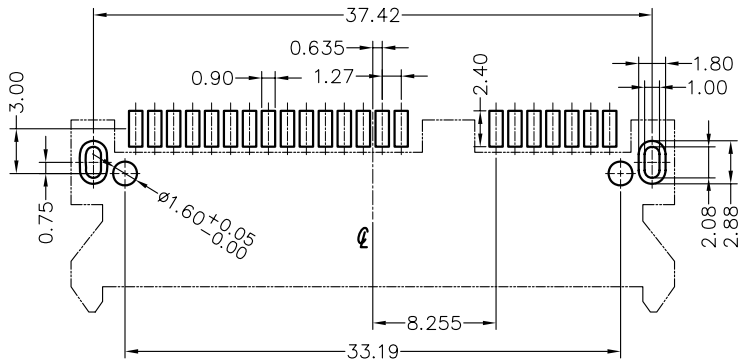
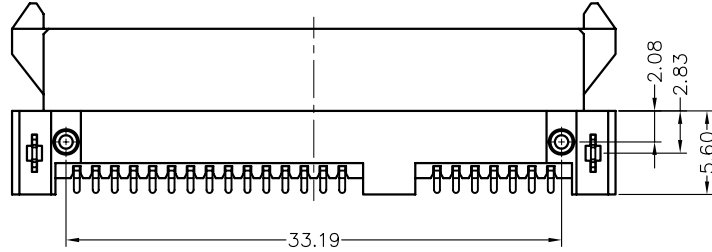


TITLE:  
SATA 7+15P RECEPTACLE  
5.0H R/A REVERSE SMT TYPE

DWG NO. SAR43A_C	SERIES SAR43	SHEET 1/2
FILE PATH SATA\SAR43\SAR43A_CA		REV. A

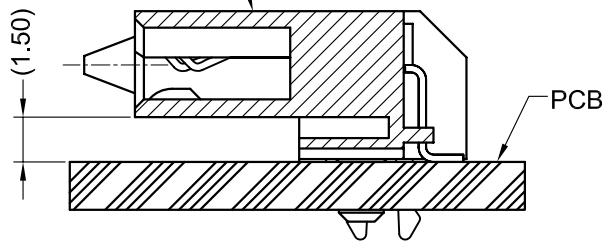
CUSTOMER DRAWING

REV.	DESCRIPTION	DATE	DRAWN	CHECKED	APPROVED
A	NEW VERSION	11-NOV-08	Denice	Deming	Peter



RECOMENDED PCB LAYOUT(T=1.6mm)  
PCB TOLERANCE:±0.05

SATA COMBO CONN



TOLERANCE (UNLESS SPECIFIED)	
0.0	±0.35
0.00	±0.20
0.000	±0.XX



**UNICORN**  
ELECTRONICS  
COMPONENTS

TITLE:  
SATA 7+15P RECEPTACLE  
5.0H R/A REVERSE SMT TYPE

DWG NO. SAR43A_C	SERIES SAR43	SHEET 2/2
FILE PATH SATA\SAR43\SAR43A_CA		REV. A