

REV.	DESCRIPTION	DATE	DRAWN	CHECKED	APPROVED
A	NEW VERSION	2009,10,23	Denice	Deming	Peter
B	REVISED	2011,02,10	Denice	Karl	Peter

ORDERING INFORMATION

SAC33E 022 G6F1 1
 ① ② ③ ④

① PRODUCT SERIES

SATA 7+15P RECEPTACLE
 VER. SMT TYPE

② NUMBER OF CONTACTS

22P

③ CONTACT PLATING

G6F1: GOLD(15u") PLATING ON CONTACT AREA
 MATTE-TIN (100u") ON SOLDER AREA
 NICKEL (50u") UNDERPLATED OVER ALL.
 (LEAD FREE UNDER 90 PPM)

④ PACKING METHOD

1: TRAY
 3: TAPE/REEL

PERFORMANCE CHARACTERISTICS

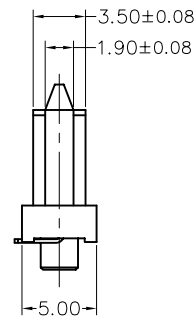
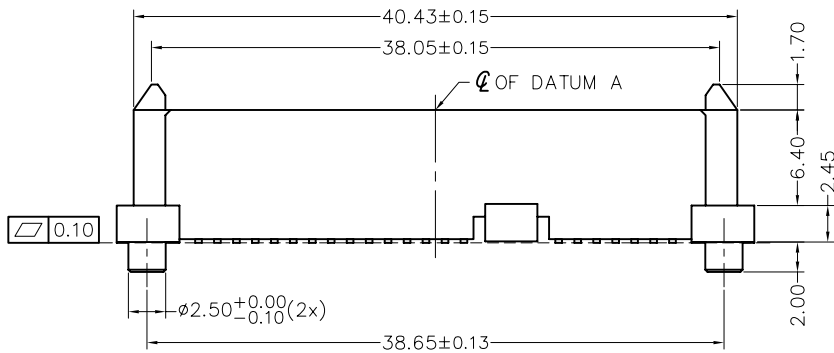
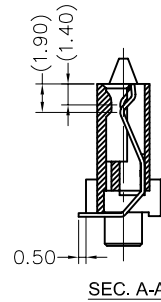
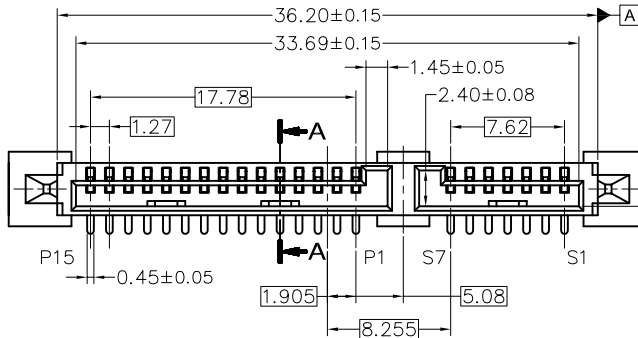
OPERATING VOLTAGE: 15V DC MAX.
 CURRENT RATING: 1.5 A MAX.
 CONTACT RESISTANCE: 30 mΩ MAX.
 INSULATION RESISTANCE: 1000 MΩ MIN.
 DIELECTRIC WITHSTANDING VOLTAGE: 500V AC/MINUTE
 OPERATING TEMPERATURE: -45°C TO +85°C

MATERIALS

HOUSING: HIGH TEMPERATURE THERMOPLASTIC,
 UL94V-0 RATDE
 HOUSING COLOR: BLACK
 CONTACT: PHOSPHOR BRONZE
 BOARD LOCK: BRASS

PLATING

CONTACT: SEE ORDERING INFORMATION
 BOARD LOCK: MATTE-TIN (100u" MIN.)
 NICKEL (50u" MIN) UNDERPLATED OVER ALL.



TOLERANCE (UNLESS SPECIFIED)	
0.0	±0.35
0.00	±0.20
0.000	±0.XX



UNICORN
 ELECTRONICS
 COMPONENTS

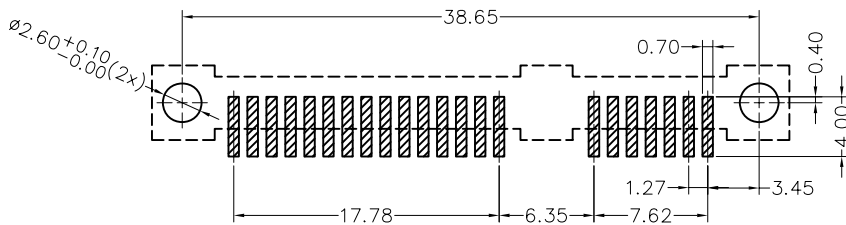
TITLE:
 SATA COMBO 22P RECEPTACLE
 VERTICAL R/A SMT TYPE

DWG NO.
 SAC33E_C
 FILE PATH
 SATA\SAC33E\SAC33E_CB

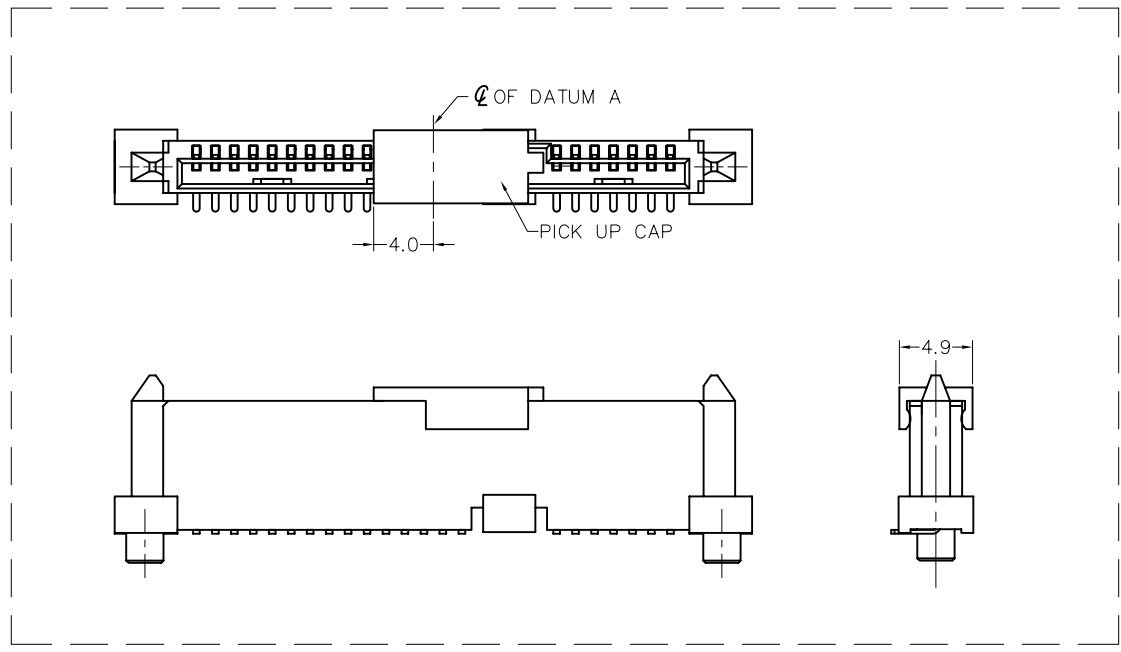
SERIES
 SAC33E
 SHEET
 1 / 2
 REV.
 B

CUSTOMER DRAWING

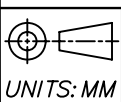
REV.	DESCRIPTION	DATE	DRAWN	CHECKED	APPROVED
A	NEW VERSION	2009,10,23	Denice	Deming	Peter
B	REVISED	2011,02,10	Denice	Karl	Peter



RECOMMENDED PCB LAYOUT



FINISHED PRODUCT



TOLERANCE (UNLESS SPECIFIED)

0.0	±0.35
0.00	±0.20
0.000	±0.XX



UNICORN
ELECTRONICS
COMPONENTS

TITLE:
SATA COMBO 22P RECEPTACLE
VERTICAL R/A SMT TYPE

DWG NO.
SAC33E_C
FILE PATH
SATA\SAC33E\SAC33E_CB

SERIES
SAC33E

SHEET
2 / 2
REV.
B

A

B

C

D

E

F