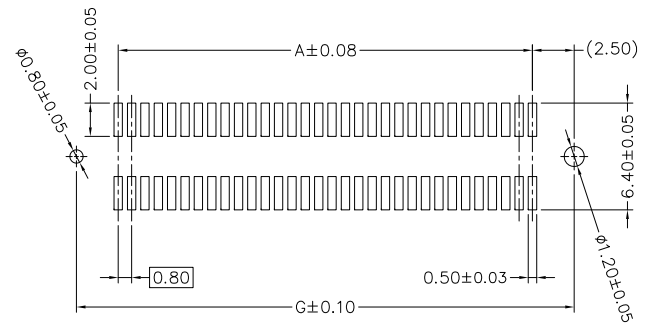
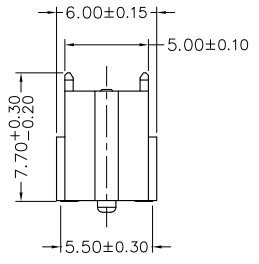
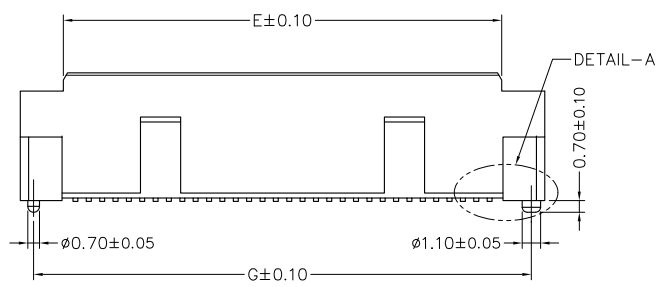


DETAIL-A  
SCALE 3:1



RECOMMENDED PCB LAYOUT WITH PEGS

NOTE:

1. MATERIAL
  - 1.1 HOUSING: LCP, HIGH TEMPERATURE THERMOPLASTIC, UL94V-0 RATED. (COLOR: NATURE)
  - 1.2 TERMINAL: BRASS; T:0.20mm
  - 1.3 CAP: STAINLESS; T:0.20mm
2. TERMINAL FINISH
  - 2.1 CONTACT AREA: GOLD PLATING (SEE ORDERING INFORMATION)
  - 2.2 SOLDER AREA: TIN PLATING 80μ" MIN.
  - 2.3 UNDERPLATE PLATED: NICKEL 50μ" MIN.
3. CAP FINISH  
NO PLATED

< ORDERING INFORMATION >

BP077 XXXX GXXF1 3 1

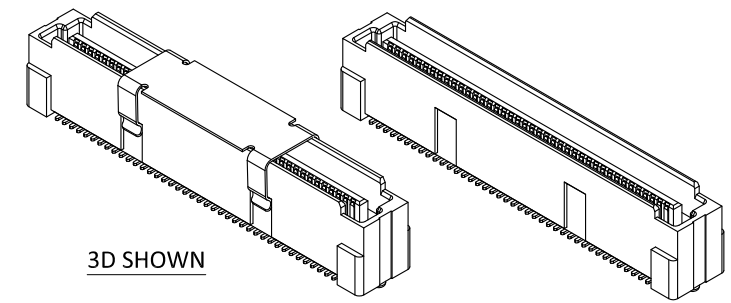
SERIES NO. \_\_\_\_\_  
0.8 PITCH BOARD TO BOARD  
7.7H PLUG CONNECTOR

CONTACT POS. \_\_\_\_\_  
SEE DIM. TABLE

CAP OPTION  
0: WITHOUT CAP  
1: WITH WATER CAP

PACKAGE  
2: TUBE  
3: T&R

CONTACT PLATING  
GOLD PLATING ON CONTACT AREA  
MATTE-TIN (80μ" MIN.) ON SOLDER AREA  
NICKEL (50μ" MIN.) UNDERPLATED OVER ALL.  
G29F1: GOLD 4μ" MIN.  
G30F1: GOLD 8μ" MIN.  
G20F1: GOLD 15μ" MIN.



3D SHOWN

DIM. TABLE

ORDERING NO.	NUMBER OF POSITIONS	DIENSON						
		A	B	C	D	E	F	G
2032	2 X 32	24.80	26.40	28.60	29.90	26.25	31.40	29.80
2040	2 X 40	31.20	32.80	35.00	36.30	32.65	37.80	36.20
2060	2 X 60	47.20	48.80	51.00	52.30	48.65	53.80	52.20

3	Revised	2018,10,31
2	Revised	2016,12,30
1	New Version	2016,12,07
REV.	DESCRIPTION	DATE
DR. Shun	CHK. Ren	APP. Peter

TOLERANCE (UNLESS SPECIFIED)

0.0 ±0.25  
0.00 ±0.13  
0.000 ±0.05  
ANG. ±1

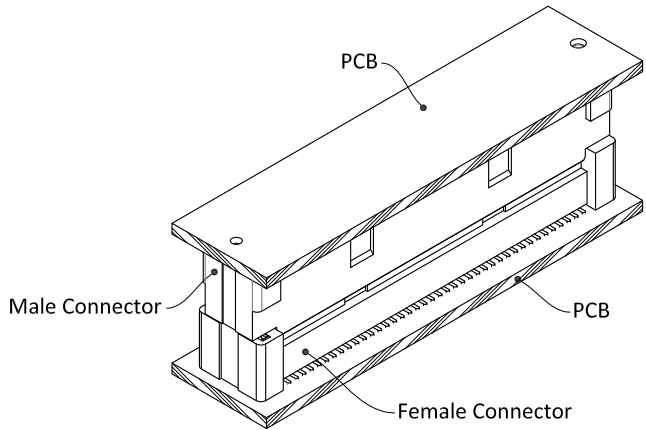
UNITS: MM



TITLE: 0.8 PITCH BOARD TO BOARD  
7.7H PLUG CONNECTOR

DWG NO. BP077\_P  
FILE PATH BTB\BP077\_P3

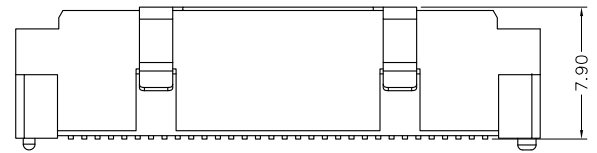
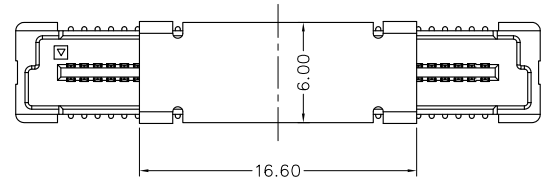
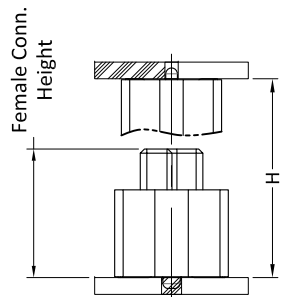
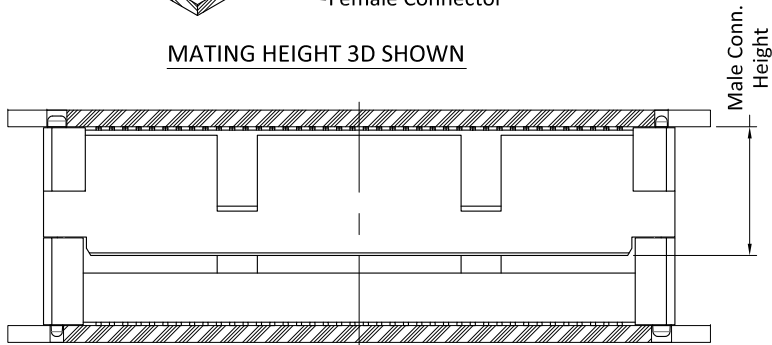
SHEET 1 / 2  
REV. 3



@ Mating Height Option Table


Connector Height(mm)		Mating Height(mm)
Male	Female	H
7.7	3.7	7.9
	7.7	11.90

MATING HEIGHT 3D SHOWN



WITH CAP

3	Revised	2018,10,31
2	Revised	2016,12,30
1	New Version	2016,12,07
REV.	DESCRIPTION	DATE
DR. Shun	CHK. Ren	APP. Peter


**UNITS: MM**  
**TOLERANCE (UNLESS SPECIFIED)**  
 0.0 ±0.35  
 0.00 ±0.20  
 0.000 ±0.10  
 ANG. ±2°


**UNICORN**  
 ELECTRONICS  
 COMPONENTS

**TITLE:**  
 0.8 Pitch Board To Board  
 Mating Height Option

**DWG NO.**  
 BP077\_P  
**FILE PATH**  
 BTB\BP077\_P3

**SHEET**  
 1 / 1  
**REV.**  
 3