



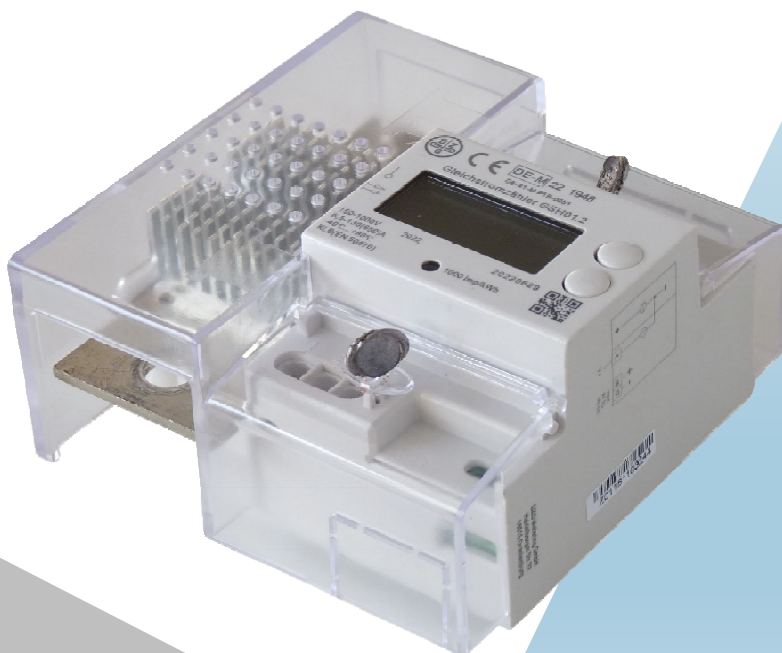
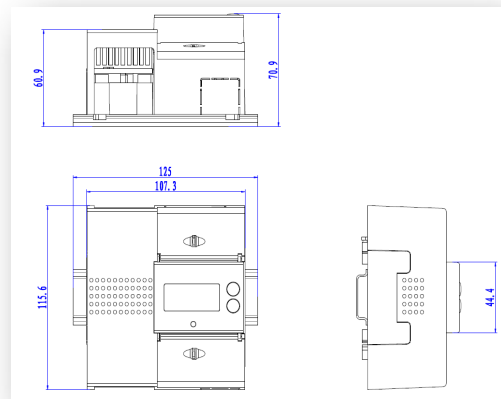
DZG Metering GmbH

# GSH01 DC ELECTRONIC METER

## Main Features :

- Mains Energy, Device Energy, Line Loss Energy Measurement
- Single or Bidirectional Energy Directions Configurable
- Suitable For DC E-mobility Charging Stations & Any Sub-billing Applications
- PTB & IEC Certificates

## Overall dimensions(mm)



**ONTOP**

ONTOP ELECTRONIC CO.,LTD TEL:886-2-28382606, FAX:886-2-28382604 e-Mail: sales@sac-ontop.com.tw  
Add: 2F-2 No.161 SEC. 6, Zhong Shang North Rd. Taipei, Taiwan 111 www.sac-ontop.com.tw

# Specification GSH01



DZG Metering GmbH

**Type** DC Electronic Meter

**Standards** EN 50470-1, EN 50470-3, IEC 62052-41

## Voltage

U<sub>max</sub> 1000V

U<sub>min</sub> 150V

## Current

Minimum current I<sub>min</sub> 6.5A

Reference current I<sub>b</sub> 130A

Maximum current I<sub>max</sub> 650A

Starting current I<sub>st</sub> 0.4%I<sub>b</sub>

**Accuracy** Class B

**Pulsating Indicator** LED

**Pulsating (meter constant)** 1000imp/kWh

## Environment

Temperature range Operation: -40~80°C

Storage: -40~85°C

**Portection Degree** IP 51 in protective enclosure

**Insulation Class** II

## Typical Power Consumption

Voltage circuit power at U<sub>n</sub> < 0.5W

Current circuit power at I<sub>max</sub> < 0.04W/A\*I<sub>max</sub>

**LCD Display** Dot Matrix type, backlight supported

**Auxiliary Power Supply** 9Vdc ~ 36Vdc

**Communication Interface** 3\*RS485 port, upto 115200bps

**Weight Of Meter** About 0.5kg

**Dimension(LxWxD)** 115.6 x 107.3 x 70.9mm