

# Plug Top & Desk Top Power Adaptors

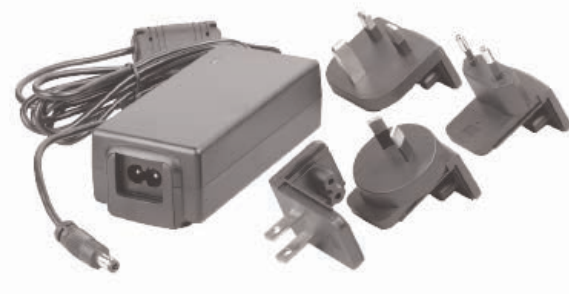


[www.powersolve.com.tw](http://www.powersolve.com.tw)

## PSD 40-65 Series 40-65 Watts Switch Mode Universal AC Input

### Features

- This unique adaptor can be used either as a desk top power supply, with a figure of eight input plug, or a wall mount using interchangeable AC plugs
- UK, Euro, USA & Australian input plugs
- Universal 90-264Vac input
- Optional Output Connectors
- CEC Compliant
- Other Output Voltages Available
- Constant Current Output Versions Available
- Suitable for Industrial Applications
- Full Safety Approvals
- Class II Insulation (Class I available on request)



### Electrical Specification

|                             |  |
|-----------------------------|--|
| AC Input Voltage Range      | 90 - 264VAC  |
| Frequency                   | 47 - 63Hz  |
| Input Current               | 1.6A max. at low line input & full load output   |
| Inrush Current              | 60 A max. at 230VAC input & 25°C ambient temperature   |
| Leakage Current             | <0.25mA  |
| Input Protection            | 1.6A 250VAC Fuse   |
| No Load Power Consumption   | <0.5W max. at nominal input & no load output   |
| DC Outputs                  | See table  |
| Ripple & Noise              | 1% Vout  |
| Hold Up Time                | 10ms at nominal input & full load output   |
| No Load Operation           | Yes, to protect power supply & system from damage  |
| Short Circuit Protection    | Auto recovery, can not exceed 8A max. after 1 minute at nominal line input   |
| Over Current Protection     | 150-200%, foldback type, auto recovery   |
| Over Voltage Protection     | 110-140%, voltage limiting, recycle input to recover   |
| Operating Temperature Range | 0°C to +50°C   |
| Operating Humidity          | 8-90% RH non-condensing  |
| Storage Temperature Range   | -20°C to +70°C   |
| Storage Humidity            | 5-95% RH non-condensing  |
| Cooling                     | Free air convection  |
| Dimensions                  | 119 x 54 x 36mm  |
| Weight                      | 0.33kg   |
| Withstand Voltage           | I/P-O/P (FG): 3kVAC / 10mA / 1 minute  |
| EMI                         | EN55022: 2006 Class B, EN61000-3-2: 2006, EN61000-3-3: 1995+A1: 2001+A2: 2005<br>EN55024: 1998+A1: 2001+A2: 2003, IEC61000-4-2, -3, -4, -5, -6+A1: 2004, -8, -11 |
| Safety                      | CB (IEC60950-1: 2001), TUV GS (EN60950-1: 2001+A11), cUL, CE, VCCI   |
| Output Connector            | Standard stock items - 02 version with 2.5 x 5.5 x 9.5mm barrel connector, centre positive<br>Other connectors available - consult sales office                  |

### Output Voltage and Current Ratings

| MODEL        | OUTPUT VOLTAGE | OUTPUT CURRENT | EFFICIENCY LEVEL |
|--------------|----------------|----------------|------------------|
| PSD40-050-02 | 5V             | 8.00A          |                  |
| PSD65-120-02 | 12V            | 5.42A          | IV               |
| PSD65-150-02 | 15V            | 4.33A          | IV               |
| PSD65-160-02 | 16V            | 4.06A          | IV               |
| PSD65-180-02 | 18V            | 3.61A          | IV               |
| PSD65-190-02 | 19V            | 3.42A          | IV               |
| PSD65-200-02 | 20V            | 3.25A          | IV               |
| PSD65-240-02 | 24V            | 2.70A          | V                |

NOTE: Suffix -02 denotes the standard 2.5 x 5.5 x 9.5mm, centre positive, output connector. Other output connector versions will have a different 2 digit suffix

Email: [sales@powersolve.com.tw](mailto:sales@powersolve.com.tw)

# Plug Top & Desk Top Power Adaptors



[www.powersolve.com.tw](http://www.powersolve.com.tw)

## Mechanical Details

