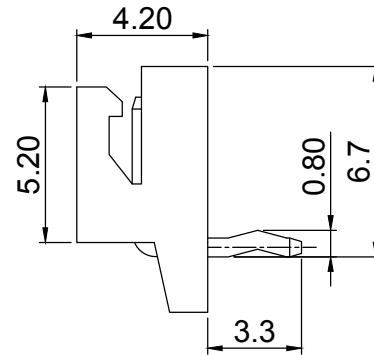
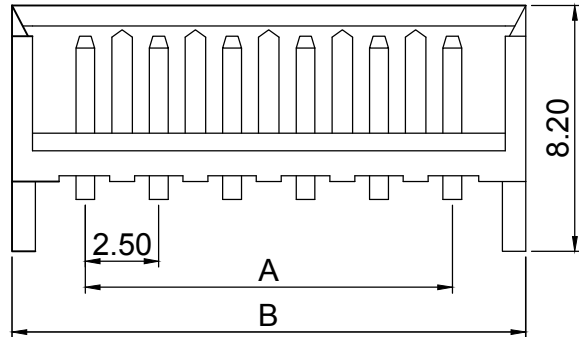


RECOMMENDED P.C.BOARD HOLE DIMM.



PART NO.:
LW-EH 250 R - XX

No.Of Contact:02~12
 Angle Type:Right Angle (90°)
 Pitch:2.50mm
 Wafer Series No.

SPECIFICATIONS

Electrical

Current Rating: 3A AC, DC

Voltage Rating: 250V AC/ max.

Operating Temp.: -25°C ~ +85°C

Insulation Resistance: 1000MΩ/ min.

Dielectric Withstanding Voltage: 800V AC/ min.

Contact Resistance: 10mΩ/ max.

Material

Terminal Material: Brass, Copper-Undercoated,
 Tin- plated

Material: Nylon 66, UL94V-0

Poles	Dimension mm (in.)		Part No.
	A	B	
02	2.50 (0.098)	7.50 (0.295)	LW-EH250R-02
03	5.00 (0.197)	10.00 (0.394)	LW-EH250R-03
04	7.50 (0.295)	12.50 (0.492)	LW-EH250R-04
05	10.00 (0.394)	15.00 (0.591)	LW-EH250R-05
06	12.50 (0.492)	17.50 (0.689)	LW-EH250R-06
07	15.00 (0.591)	20.00 (0.787)	LW-EH250R-07
08	17.50 (0.689)	22.50 (0.886)	LW-EH250R-08
09	20.00 (0.787)	25.00 (0.984)	LW-EH250R-09
10	22.50 (0.886)	27.50 (1.802)	LW-EH250R-10
11	25.00 (0.984)	30.00 (1.181)	LW-EH250R-11
12	27.50 (1.802)	32.50 (1.280)	LW-EH250R-12

		公差/UNLESS OTHERWISE SPECIFIED TOLERANCES ARE		單位/Unit mm	品名(Title):		鍊亨電子有限公司 LAI HENG TECHNOLOGY LTD. TEL:(02) 8228-6487 FAX:(02) 8228-6486
		X.XX ±0.2 X.X ±0.3		比例/Scale Free	2.5mm Wire-to-Board Header DIP 90° Type		
A0	NEW DRAWING	2018.08.16		Size A4	料號/Part No:		核對/APPD. 7/10
REV	概述/REVISION	日期/DATE			LW-EH250R-XX		製圖/DR. Mandy
					圖號/Drawing No:		報數/Sheet 1 of 1
					2501H-XX-RT		REV. A0