



ELECTRONICS TESTING CENTER, TAIWAN
 Product safety Testing Laboratory
 ADDRESS: NO.8 LANE 29, WENMING RD., LESHAN TSUEN,
 GUISHAN SHIANG, TAOYUAN COUNTY 33383, TAIWAN
 TEL:03-3280026 FAX:03-3276175
<http://www.etc.org.tw>



Page: 1 of 15 Pages
 Issue Date : Jun.03, 2013

TEST REPORT

Rep. No. : 13-05-VAA-045
 Applicant : Gainta Industries Ltd.
 Address : 1F., No. 28 , Lane 54 , Chung Cheng Road , Hsin
 Tien District , New Taipei City , Taiwan
 Commodity : Sealed aluminium box
 Model : G125, G102MF, G101.
 Series Model : See Page 14,15.
 Quantity : 3 sets
 Date of Receipt : May. 16, 2013
 Date of Testing : May. 17, 2013
 Test specification : IEC 60529 Edition 2.1 2001-02
 Ambient Environment : Temp. 20 °C, R.H. 69 %, A.P. 990 mbar
 Test Item : IP65
 Test condition & result : See the following sheets

General remarks :

The test results presented in this report relate only to the object tested.
 This report shall not be reproduced, except in full, without the written approval of the
 Issuing testing laboratory.

Approved by : Vincent Lin
 Vincent Lin





TEST REPORT

Rep. No. : 13-05-VAA-045

Page: 2 of 15 Pages

1. Test Item : IP65 (Test Model :G125, G102MF, G101.)

2. Test Conditions :

2.1 Ambient Condition

- Temperature range:15 °C to 35 °C.
- Relative humidity:25 % to 75 %.
- Air pressure:860 mbar to 1060 mbar.

2.2 IP6X (In accordance with IEC60529 13.4 test)

- Dust:Talcum powder.
- The amount of dust:2 kg/m³.
- Maximum depression of 2kPa.(20mbar).
- The duration of the test is 2 hr.
(Extraction rate is less than 40 volumes per hour)

2.3 IPX5 (In accordance with IEC60529 14.1/14.2.5 test)

- Internal diameter of the nozzle: 6.3 mm.
- Delivery rate: 12.5 l/min ±5 %.
- Distance from nozzle to enclosure surface:
between 2.5 m and 3 m.
- Test-period: 1 min/m², at least 3 min.

3. Test Result : G125, G102MF, G101.

IP Code	Results	Acceptance Criteria
IP6X	There is no trace of dust inside.	IEC60529 13.6
IPX5	There is no trace of water inside.	IEC60529 14.3

Tested by : Mark Chen
Mark Chen



TEST REPORT

Rep. No. : 13-05-VAA-045

Page: 3 of 15 Pages

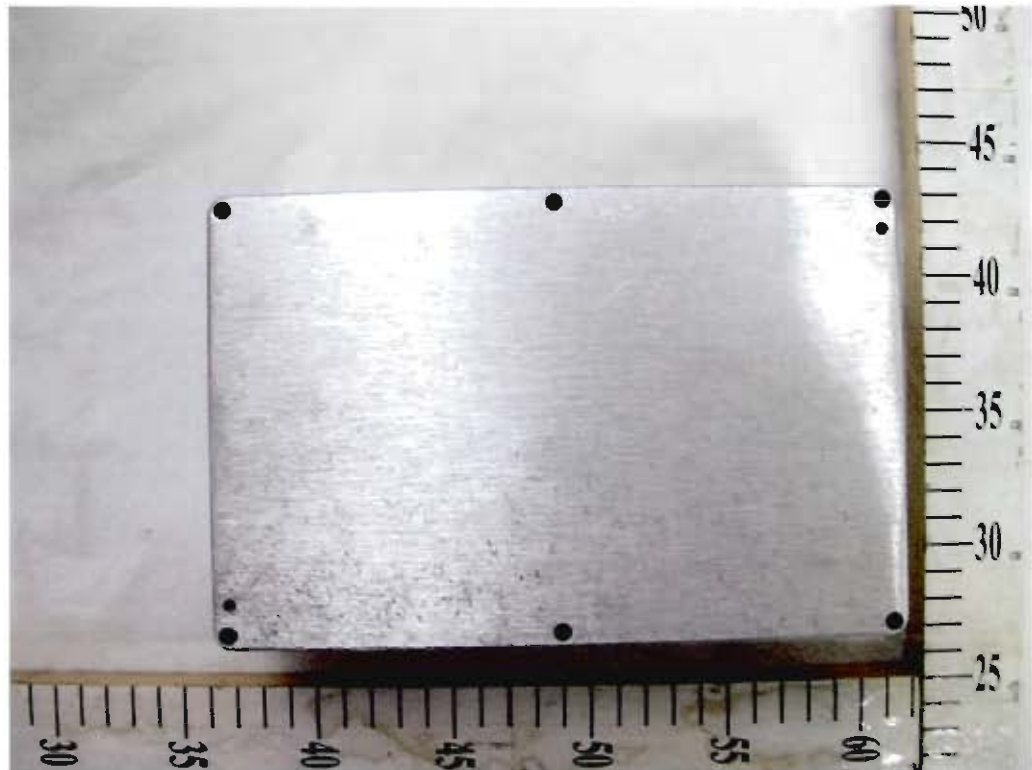
Utilized testing equipments 試驗設備列表

Test Mode 測試項目	Kind of Instrument 設備名稱	Manufacturer 製造商	Model Serial No. 型號,序號或其它資訊	Due Date 下次校驗日期
IP1X	Test sphere(50mm)試驗球	Fimko Lab.	IEC60529/Tab.6 A	2015/10/30
IP2X	Test sphere(12.5mm)試驗球	Fimko Lab.	IEC60529/Tab.6 B	2015/10/30
IP3X	Test rod,2.5mm(D)x100mm(L)試驗棒	Fimko Lab.	IEC60529/Tab.6 C	2015/10/30
IP4X	Test rod,1mm(D)x100mm(L) 試驗棒	Fimko Lab.	IEC60529/Tab.6 D	2015/10/30
√ IP5~6X	TESTING T1-16 DUST TEST CHAMBER	TESTING	IEC60529/Figure.2	2014/05/02
IPX1~2	Drip Box 滴水試驗裝置	PTL	IEC60529/Figure.3	2013/10/22
IPX3~4	Oscillating Tube 灑水及濺水試驗裝置	PTL	IEC60529/Figure.4	2013/08/07
√ IPX5~6	Hose Nozzle 對噴流保護檢測用試驗裝置	PTL	IEC60529/Figure.6	2013/10/22
IPX7~8	Water Butt 水桶	Dafong Plastic	N/A	N/A
√	Atmospheric barometer 水銀氣壓計	SATO	7640-00	2015/05/27
√	Stop watch 馬錶	Casio	HS-3	2013/08/29
	Pull/Push Gage 推拉力計	AIKOH	AE-50	2013/12/11
	High-pot tester 耐壓機 (HP2)	EXTECH	7410	2013/08/21
√	TEMP/HUMI Recorder 溫濕度計	ISUZU	TH-27R	2013/07/31

Model : G125



Model : G125



IPX5 Test.



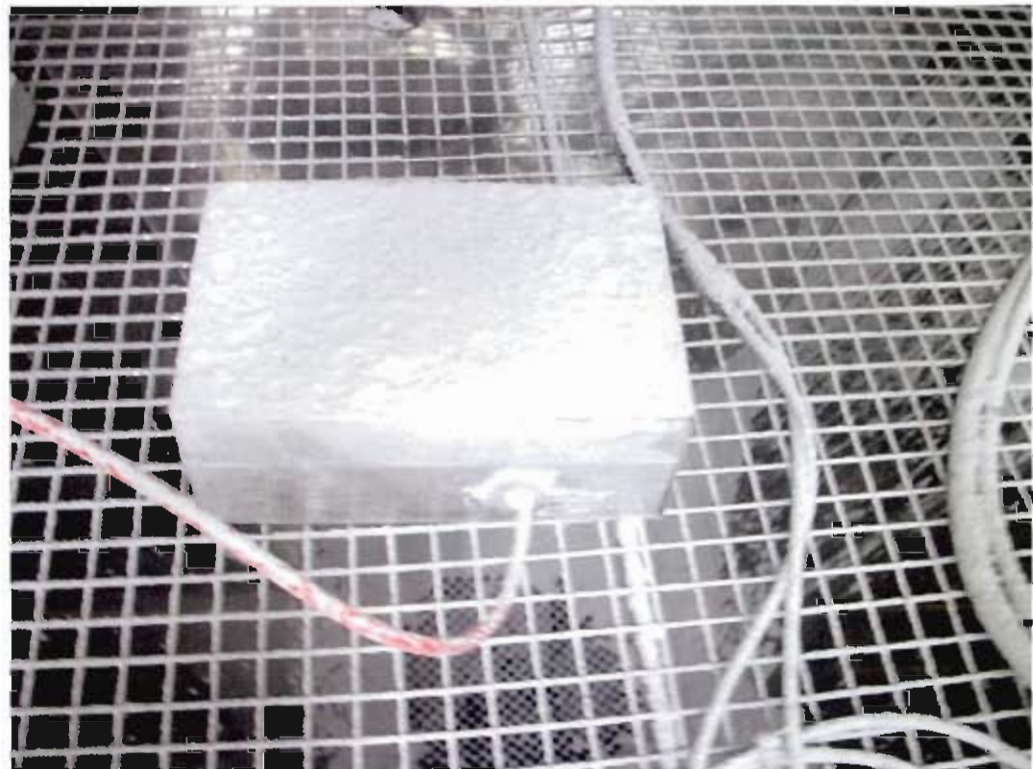
There is no trace of water inside.



There is no trace of water inside.



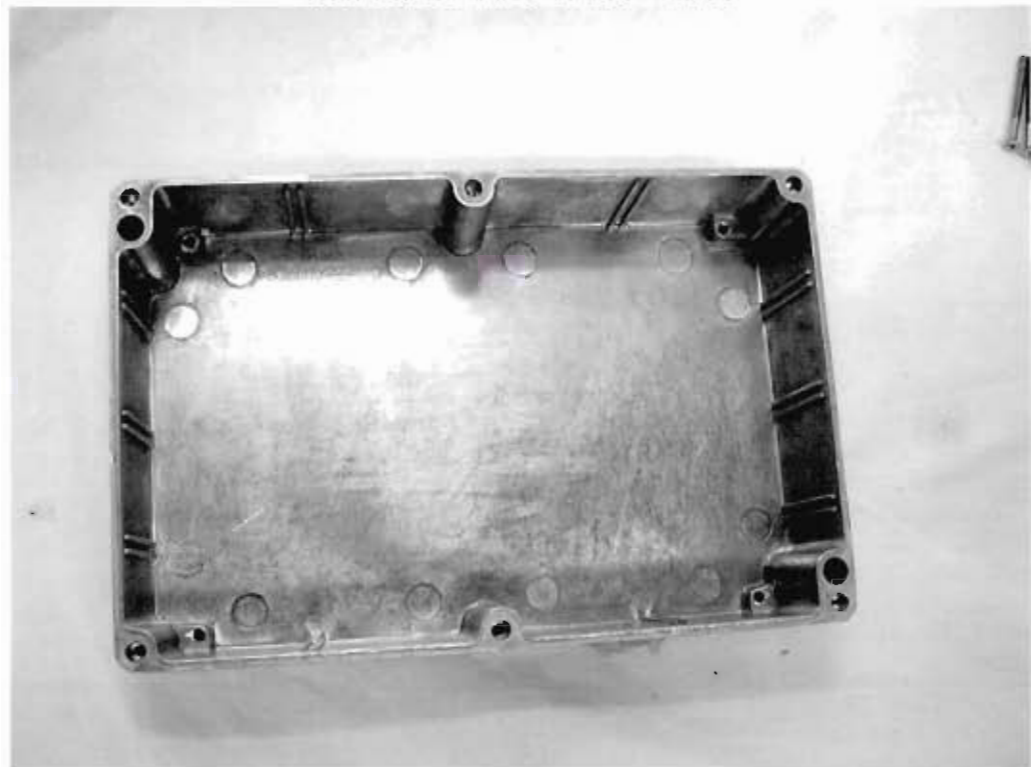
IP6X Test



There is no trace of dust inside



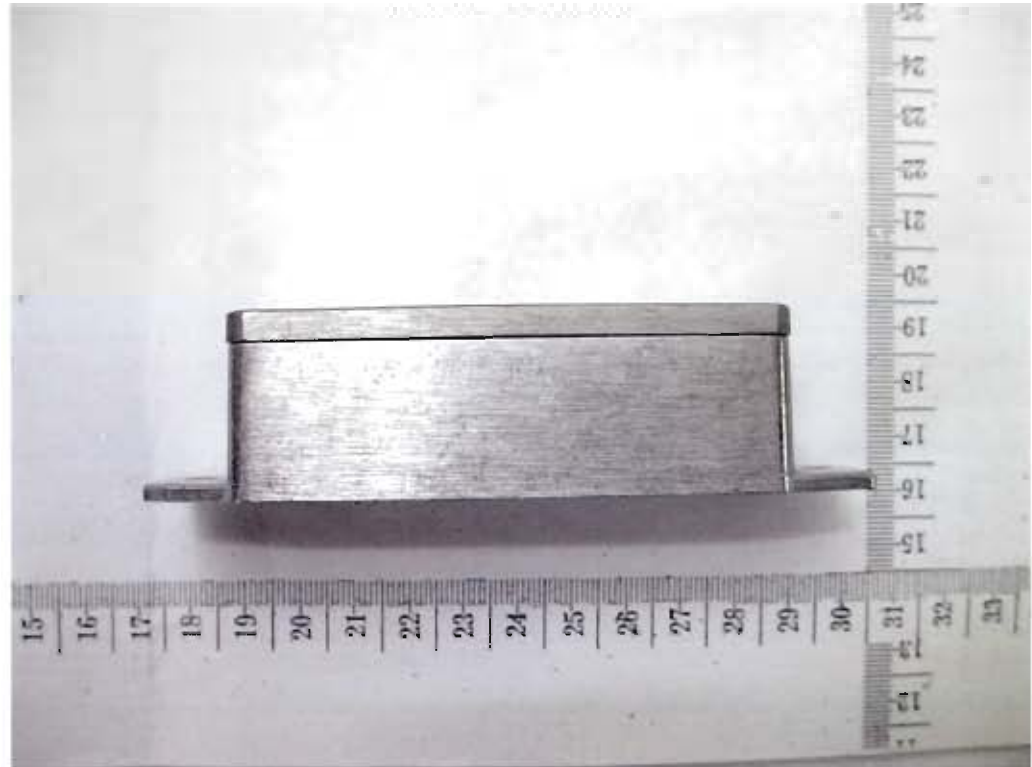
There is no trace of dust inside



Model : G102MF



Model : G102MF



IPX5 Test



There is no trace of water inside .



IP6X Test



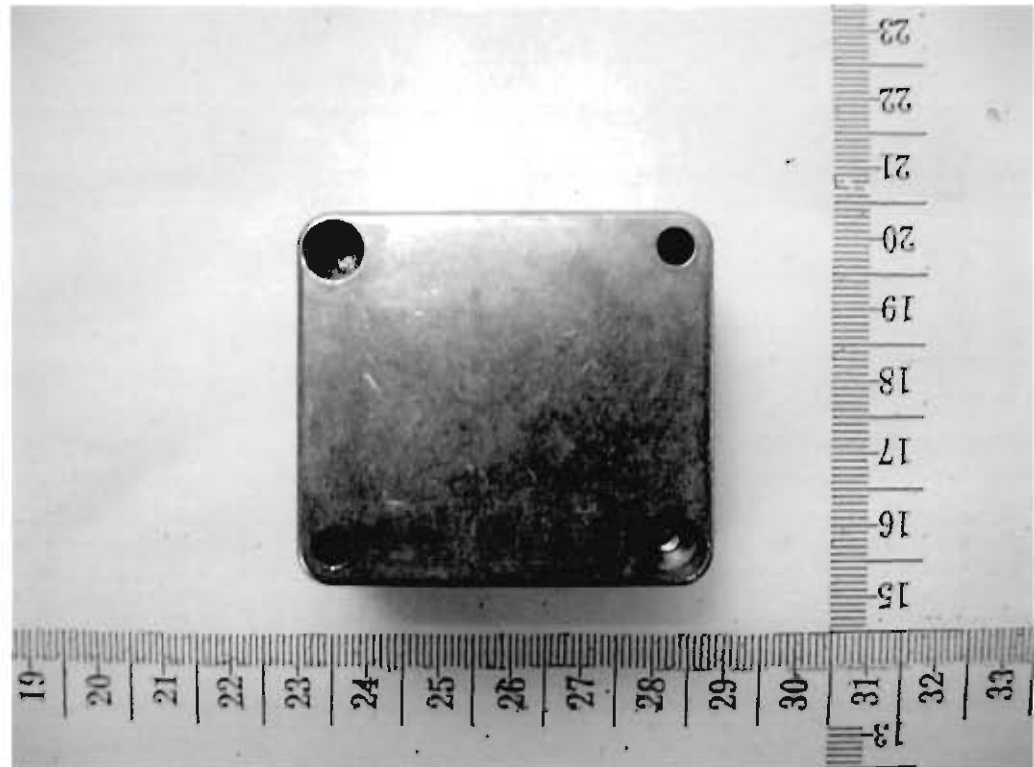
There is no trace of dust inside.



Model : G101



Model : G101



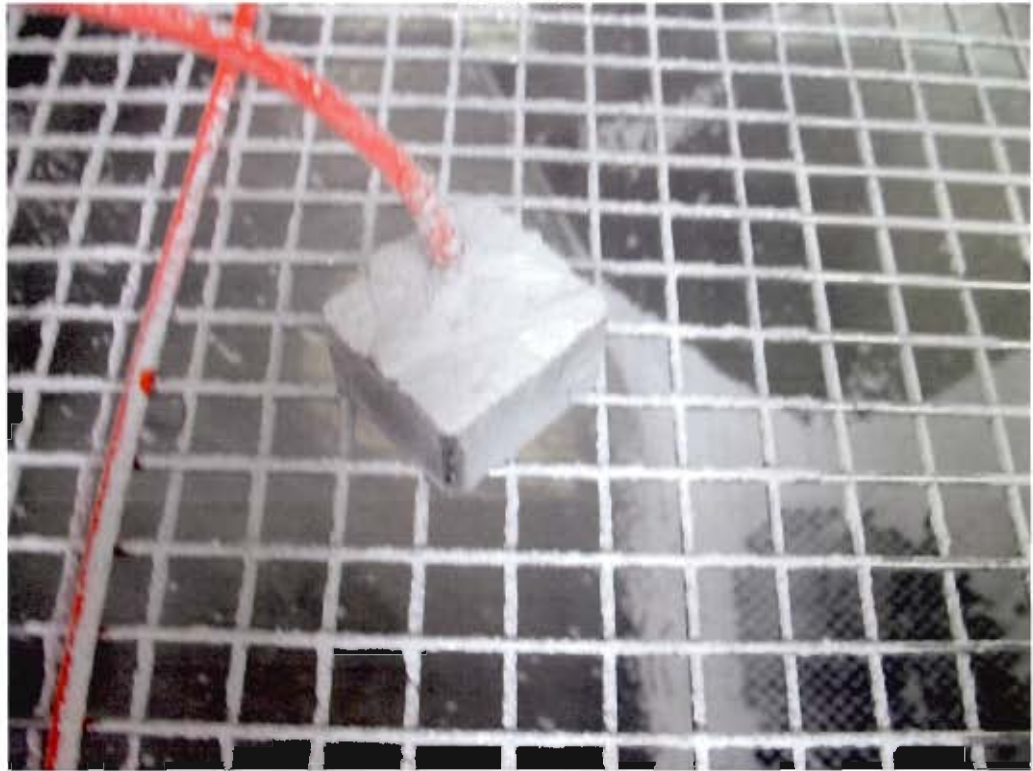
IPX5 Test



There is no trace of water inside.



IP6X Test



There is no trace of dust inside





TEST REPORT

Rep. No. : 13-05-VAA-045

Page: 14 of 15 Pages

Definition of Variable :

Model	Dimension (W*H*D) mm.	Top cover style	Construction
G101	50X45X30	Aluminium	Same construction
G102	90X36X30	Aluminium	Same construction
G103	98X64X34	Aluminium	Same construction
G104	64X58X35	Aluminium	Same construction
G106	115X65X30	Aluminium	Same construction
G107	125X80X40	Aluminium	Same construction
G108	125X80X57	Aluminium	Same construction
G109	150X63X36.5	Aluminium	Same construction
G111	115X65X55	Aluminium	Same construction
G113	115X90X55	Aluminium	Same construction
G115	148X108X75	Aluminium	Same construction
G116	160X100X60	Aluminium	Same construction
G117	160X100X81	Aluminium	Same construction
G120	171X121X55	Aluminium	Same construction
G124	222X146X55	Aluminium	Same construction
G125	222X146X82	Aluminium	Same construction
G137	120.5X120.5X101.5	Aluminium	Same construction
G139	158.5X158.5X101.5	Aluminium	Same construction
G105	55.5X41X31	Aluminium	Same construction
G110	79.6X74.6X52	Aluminium	Same construction
G112	102.5X52.5X25.5	Aluminium	Same construction
G118	175X80X60	Aluminium	Same construction
G123	200X120X75	Aluminium	Same construction
G155	260X160X90.5	Aluminium	Same construction



TEST REPORT

Rep. No. : 13-05-VAA-045

Page: 15 of 15 Pages

Model	Dimension (W*H*D) mm.	Cover style	Construction
G102MF	90X36X30	Aluminium	Same construction
G104MF	64X58X35	Aluminium	Same construction
G106MF	115X65X30	Aluminium	Same construction
G111MF	115X65X55	Aluminium	Same construction
G113MF	115X90X55	Aluminium	Same construction
G115MF	148X108X75	Aluminium	Same construction
G120MF	171X121X55	Aluminium	Same construction
G124MF	222X146X55	Aluminium	Same construction
G125MF	222X146X82	Aluminium	Same construction
G107MF	125X80X40	Aluminium	Same construction
G108MF	125X80X57	Aluminium	Same construction
G116MF	160X100X60	Aluminium	Same construction
G117MF	160X100X81	Aluminium	Same construction
G123MF	200X120X75	Aluminium	Same construction

END