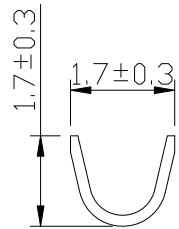
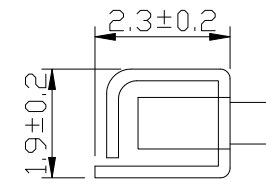
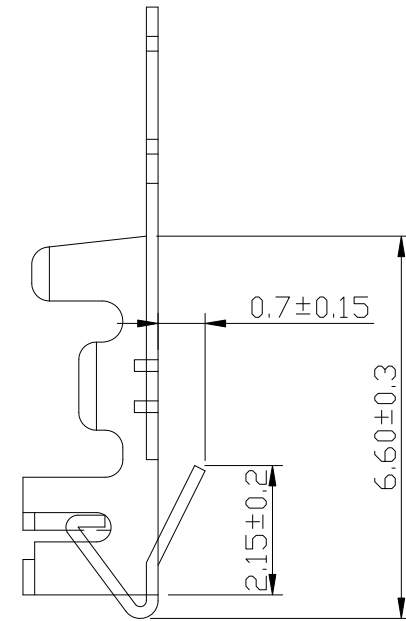
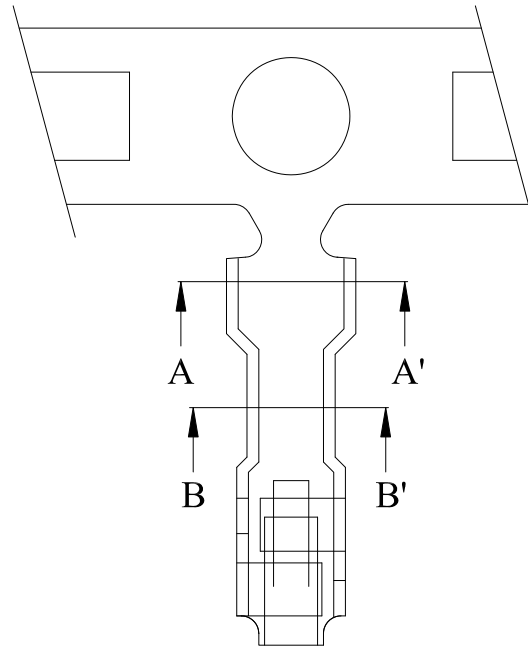


Section A-A'



Section B-B'



Specifications & Ordering Information:

Part No	Thickness	Material	Wire Range	Insulation O. D	Finish	Qty/REEL
CX-T2501	0.2mm	Phosphor Bronze	AWG #22~28	∅ 1.9mm Max	Tin-Plated	8,000PCS



DESCRIPTION(內容):	DRAWN(製圖):	GENERAL TOLERANCE: (公差)	REV:	REV	DESCRIPTION	DATE
XH 2.5mm Terminal (RoHS)	KAY	.X ±0.25 .XX ±0.13 .XXX ±0.08	R1	R0	RELEASE	2006.10.03
	CHECKED(確認):		UNIT: mm	R1	圖面更新	2012.10.26
PART NO: (料號) CX-T2501	MANDY	SCALE(比例): FREE	A4	R2		
DWG NO(圖號): 2500J-T	APPROVAL(核准):		SHEET: 1/1	R3		
	JOHNNY					

A

B

C

D

E