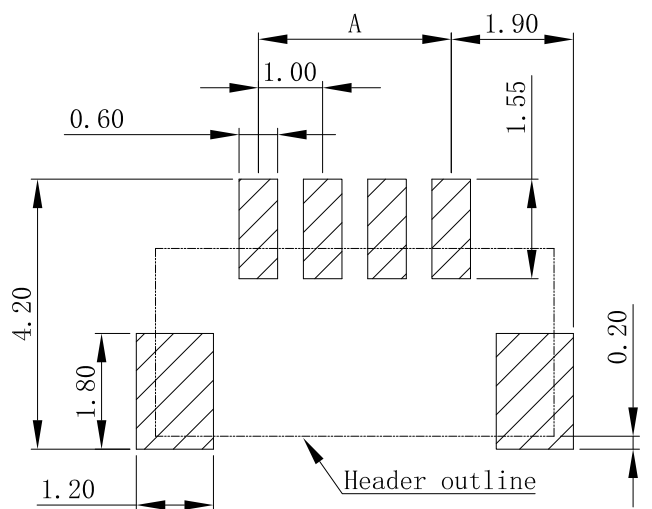
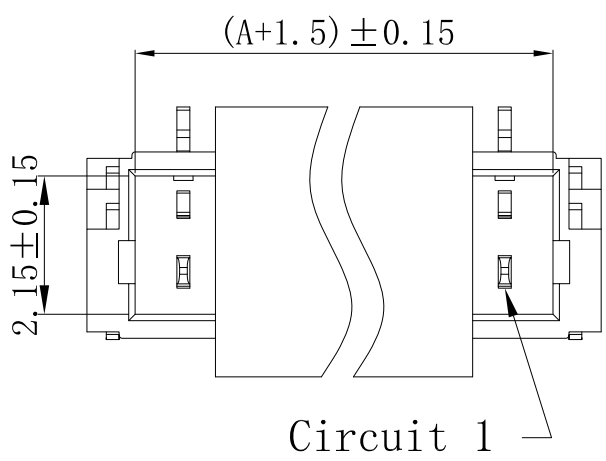
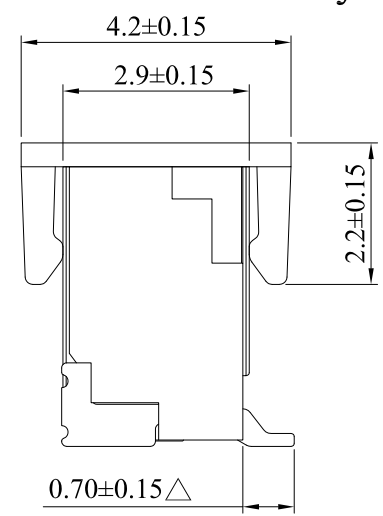
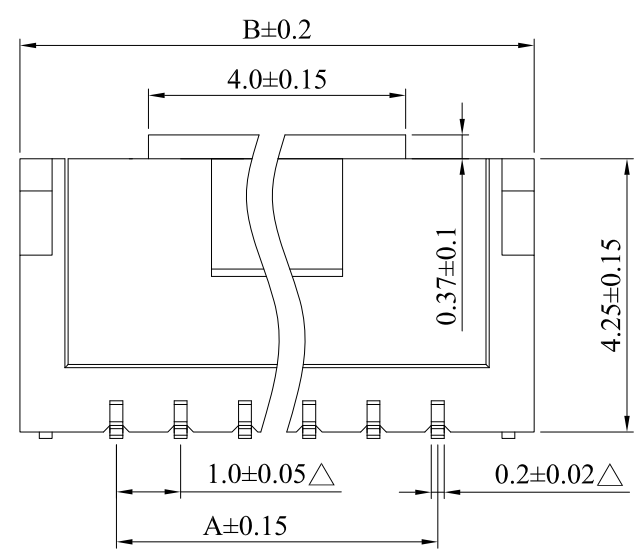


A B C D E



SPECIFICATIONS
 Current rating : 1A AC, DC
 Voltage rating : 50V AC, DC
 Temperature range : -25°C ~ +85°C
 Contact resistance : 20mΩMax
 Insulation resistance : 100MΩMin
 Withstanding voltage : 500 V AC/minute
 Pin Material : Phosphor Bronze
 Finished : Tin-plated
 Housing Material : Nylon-6T, UL94 V-0
 Color : Natural



Circuits	Dimension mm		Circuits	Dimension mm	
	A	B		A	B
2 PIN	1.00	4.00	12 PIN	11.00	14.00
3 PIN	2.00	5.00	13 PIN	12.00	15.00
4 PIN	3.00	6.00	14 PIN	13.00	16.00
5 PIN	4.00	7.00	15 PIN	14.00	17.00
6 PIN	5.00	8.00	16 PIN	15.00	18.00
7 PIN	6.00	9.00	17 PIN	16.00	19.00
8 PIN	7.00	10.00	18 PIN	17.00	20.00
9 PIN	8.00	11.00	19 PIN	18.00	21.00
10 PIN	9.00	12.00	20 PIN	19.00	22.00
11 PIN	10.00	13.00			

1
2
3

1
2
3

CHERNG WEEI

DESCRIPTION(內容):
 1.0mm Wafer 180° SMT
 帶帽子+REEL包裝 (RoHS)

PART NO:
 (料號) **CCSH-W10-XXRC**

DWG NO(圖號):

DRAWN(製圖):
 黃炳秋

CHECKED(確認):
 黃炳秋

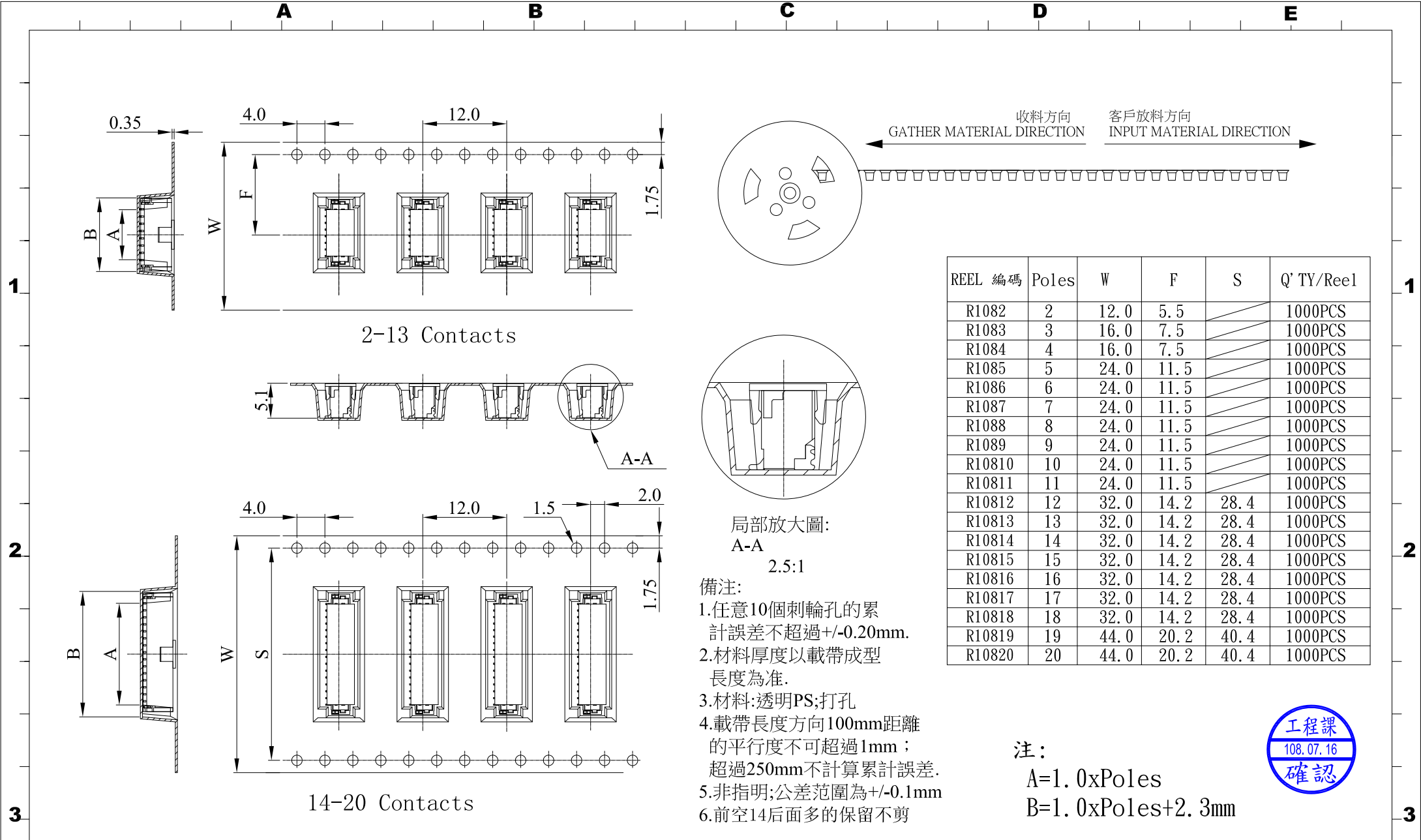
APPROVAL(核准):
 鄧文廣

GENERAL TOLERANCE:
 (公差)
 .0 ±0.20
 .00 ±0.15
 .000 ±0.10

SCALE(比例):
 1:XX

REV	DESCRIPTION	DATE
A/5		
2	舊料號CSH-W10-XXRC	2008.01.30
3	五金材質:磷青銅改為黃銅 五金材質:黃銅改為磷青銅	2008.04.11 2008.05.22
4	添加標示	2011.07.01
5	添加內徑尺寸標示	2014.12.10

A B C D E FILE NO: CWJ-4E-09



REEL 編碼	Poles	W	F	S	Q' TY/Reel
R1082	2	12.0	5.5		1000PCS
R1083	3	16.0	7.5		1000PCS
R1084	4	16.0	7.5		1000PCS
R1085	5	24.0	11.5		1000PCS
R1086	6	24.0	11.5		1000PCS
R1087	7	24.0	11.5		1000PCS
R1088	8	24.0	11.5		1000PCS
R1089	9	24.0	11.5		1000PCS
R10810	10	24.0	11.5		1000PCS
R10811	11	24.0	11.5		1000PCS
R10812	12	32.0	14.2	28.4	1000PCS
R10813	13	32.0	14.2	28.4	1000PCS
R10814	14	32.0	14.2	28.4	1000PCS
R10815	15	32.0	14.2	28.4	1000PCS
R10816	16	32.0	14.2	28.4	1000PCS
R10817	17	32.0	14.2	28.4	1000PCS
R10818	18	32.0	14.2	28.4	1000PCS
R10819	19	44.0	20.2	40.4	1000PCS
R10820	20	44.0	20.2	40.4	1000PCS

局部放大圖:
A-A
2.5:1

備注:
1.任意10個刺輪孔的累計誤差不超過 $\pm 0.20\text{mm}$.
2.材料厚度以載帶成型長度為準.
3.材料:透明PS;打孔
4.載帶長度方向100mm距離的平行度不可超過1mm;超過250mm不計算累計誤差.
5.非指明;公差範圍為 $\pm 0.1\text{mm}$
6.前空14后面多的保留不剪

注:
A=1.0xPoles
B=1.0xPoles+2.3mm



	DESCRIPTION(內容): 1.0mm Wafer 180° SMT 帶帽子+REEL包裝 (RoHS)	DRAWN(製圖): 李建安	GENERAL TOLERANCE: (公差)	REV: A/3	REV	DESCRIPTION	
	PART NO: (料號) CCSH-W10-XXRC(包裝圖)	CHECKED(確認): 方婷	.X .XXXX .XX .X° .XXX .XX°	UNIT: mm	1		2008.07.02
	DWG NO(圖號):	APPROVAL(核准): 邓文广	SCALE(比例): 1:XX	SIZE: A4	2	添加备注	2011.03.29
				SHEET: 2/2	3	刪除備註, 全部用自黏上帶	2016.03.23