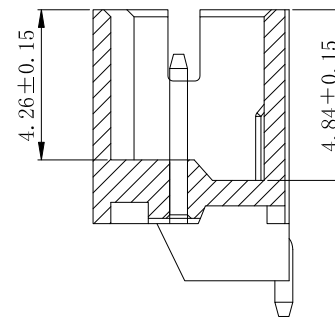
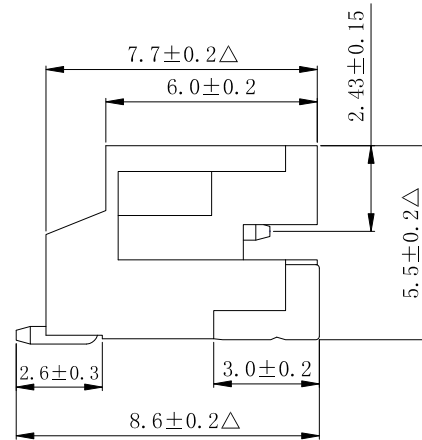
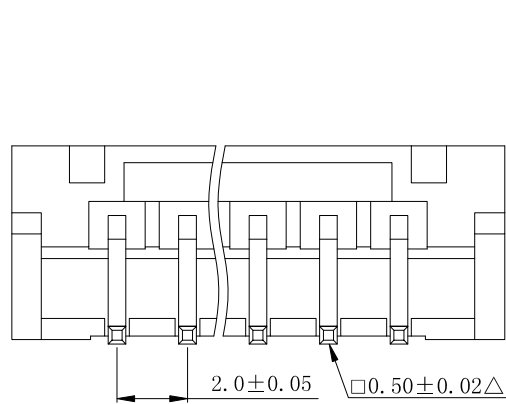
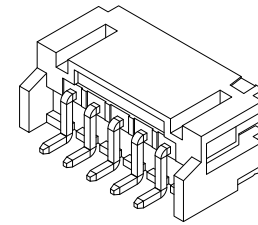


P. C. B Hole Layout

SPECIFICATIONS

Current rating : 2A AC, DC
 Voltage rating : 100V AC, DC
 Temperature range : -25°C ~ +85°C
 Contact resistance : 20mΩMax
 Insulation resistance : 1000MΩMin
 Withstanding voltage : 800 V AC/minute
 Finished : Tin-plated
 Housing Material : Nylon-6T, UL94 V-0
 Color : Nature (Beige)



剖視圖 A-A

PARTS NO.	Circuits	Dimension mm	
		A(mm)	B(mm)
CCP-W20R-02-SMTR	02	2.0	8.0
CCP-W20R-03-SMTR	03	4.0	10.0
CCP-W20R-04-SMTR	04	6.0	12.0
CCP-W20R-05-SMTR	05	8.0	14.0
CCP-W20R-06-SMTR	06	10.0	16.0
CCP-W20R-07-SMTR	07	12.0	18.0
CCP-W20R-08-SMTR	08	14.0	20.0
CCP-W20R-09-SMTR	09	16.0	22.0
CCP-W20R-10-SMTR	10	18.0	24.0
CCP-W20R-11-SMTR	11	20.0	26.0
CCP-W20R-12-SMTR	12	22.0	28.0
CCP-W20R-13-SMTR	13	24.0	30.0
CCP-W20R-14-SMTR	14	26.0	32.0
CCP-W20R-15-SMTR	15	28.0	34.0
CCP-W20R-16-SMTR	16	30.0	36.0



DESCRIPTION(內容):
2.0mm Pin Wafer 90° SMT □ =0.5
REEL包裝 (RoHS)

PART NO:
 (料號) **CCP-W20R-XX-SMTR**
 DWG NO(圖號):

DRAWN(製圖):
 黃炳秋

CHECKED(確認):
 黃炳秋

APPROVAL(核准):
 鄧文廣

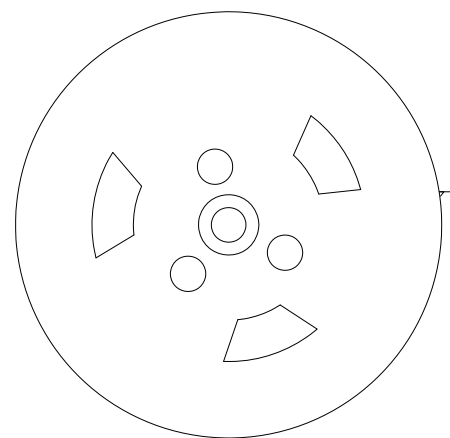
GENERAL TOLERANCE:
 (公差)
 .0 ±0.20
 .00 ±0.15

SCALE(比例):
 1:XX

REV: **A/3**
 UNIT: **mm**
 SIZE: **A4**
 SHEET: **1/2**

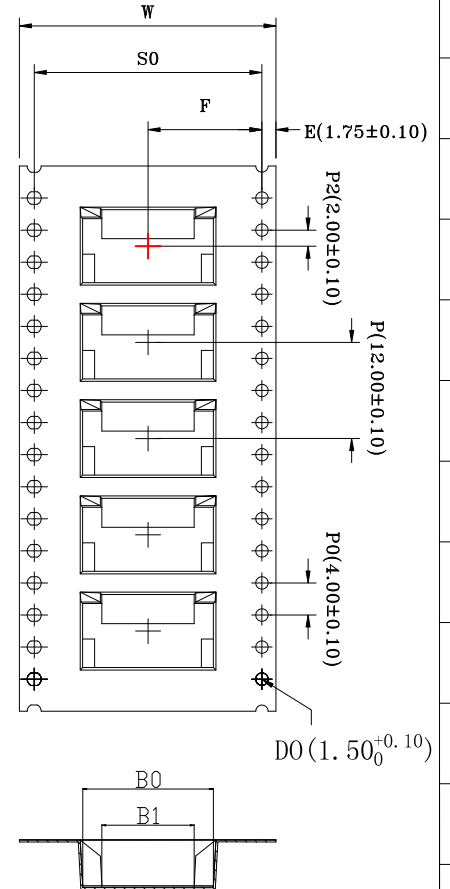
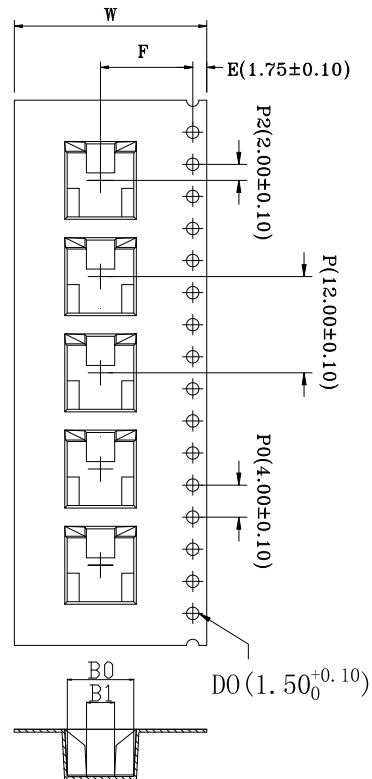
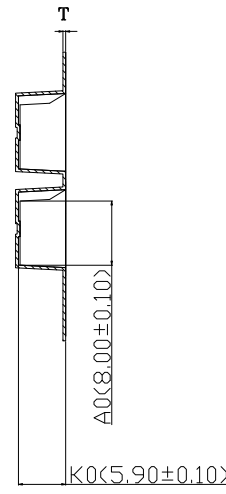
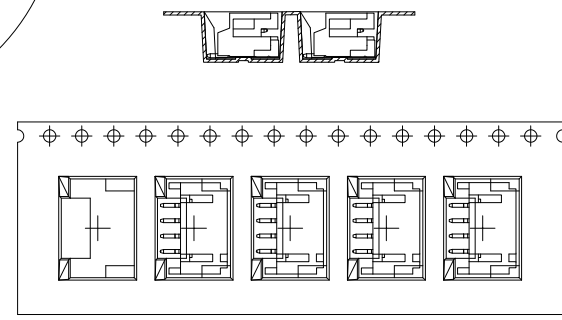
REV	DESCRIPTION	DATE
1	△此符号为重点管控尺寸	2006.07.24
2	變更電氣性能描述	2013.08.14
3	變更電氣性能, 版本修正, 补充2.6±0.3尺寸	2016.05.26
4		

A **B** **C** **D** **E**



收料方向
GATHER MATERIAL DIRECTION ←

客戶放料方向
INPUT MATERIAL DIRECTION →



1

1

2

2

3

3

REEL 編碼	Number of Contacts	W±0.3	F±0.15	B0±0.1	B1±0.1	S0±0.10	T±0.05	Q' TV/Reel	13"r (m)
R2092	02P	16	7.5	8.3	3.5	/	0.50	800Pcs	10.4
R2093	03P	24	11.5	10.3	5.5				
R2094	04P			12.3	7.5				
R2095	05P	32	14.2	14.3	9.5				
R2096	06P			16.3	11.5				
R2097	07P	44	20.2	18.3	13.5				
R2098	08P			20.3	15.5				
R2099	09P	56	26.2	22.3	18.5				
R20910	10P			24.3	20.5				
R20911	11P	52.40	0.40	26.3	21.5				
R20912	12P			28.3	23.5				
R20913	13P	/	/	30.3	25.5				
R20914	14P			32.3	27.5				
R20915	15P	/	/	34.3	29.5				
R20916	16P			36.3	31.5				

工程課
105.05.26
確認



DESCRIPTION(內容):
2.0mm Pin Wafer 90° SMT □ =0.5 REEL包裝(RoHS)

PART NO:
(料號) **CCP-W20R-XX-SMTR(包裝圖)**

DWG NO(圖號):

DRAWN(製圖): 李建安
CHECKED(確認): 李建安
APPROVAL(核准): 鄧文廣

GENERAL TOLERANCE:
(公差)
.X .XXXX
.XX .X°
.XXX .XX°

SCALE(比例): 1:XX

REV: **A/3**
UNIT: **mm**
SIZE: **A4**
SHEET: **2/2**

REV	DESCRIPTION	DATE
1		2008.01.30
2	更改每卷包裝數量,由每卷500PCS改為每卷800PCS.	2009.06.26
3	添加尺寸	2011.05.18
4		