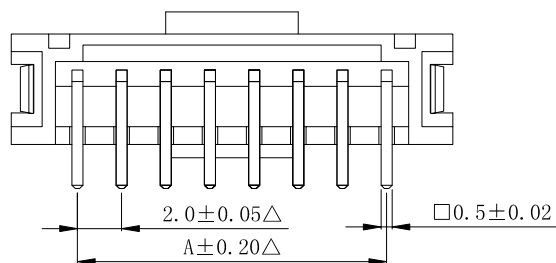
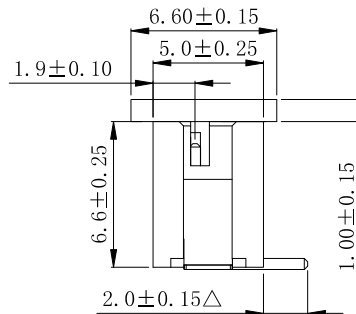
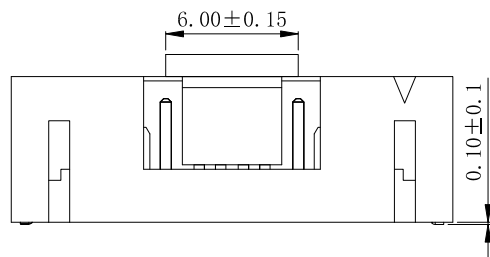


P. C. B LAYOUT



SPECIFICATIONS

Current rating	:2A AC, DC
Voltage rating	:100V AC, DC
Temperature range	: -25°C ~ +85°C
Contact resistance	:20mΩMax
Insulation resistance	:1000MΩMin
Withstanding voltage	:800 V AC/minute
Finished	:Tin - plated
Housing Material	:Nylon-6T, UL94 V-0
Color	:Nature (Beige)

PARTS NO.	Circuits	Dimension mm	
		A(mm)	B(mm)
CCP-W20-02-SMT-RC	02	2.0	8.0
CCP-W20-03-SMT-RC	03	4.0	10.0
CCP-W20-04-SMT-RC	04	6.0	12.0
CCP-W20-05-SMT-RC	05	8.0	14.0
CCP-W20-06-SMT-RC	06	10.0	16.0
CCP-W20-07-SMT-RC	07	12.0	18.0
CCP-W20-08-SMT-RC	08	14.0	20.0
CCP-W20-09-SMT-RC	09	16.0	22.0
CCP-W20-10-SMT-RC	10	18.0	24.0
CCP-W20-11-SMT-RC	11	20.0	26.0
CCP-W20-12-SMT-RC	12	22.0	28.0
CCP-W20-13-SMT-RC	13	24.0	30.0
CCP-W20-14-SMT-RC	14	26.0	32.0
CCP-W20-15-SMT-RC	15	28.0	34.0
CCP-W20-16-SMT-RC	16	30.0	36.0



DESCRIPTION(內容):
2.0mm Wafer 180° SMT □ =0.50
 REEL+CAP (RoHS)

PART NO:
 (料號) **CCP-W20-XX-SMT-RC**

DWG NO(圖號):

DRAWN(製圖):
 楊兵

CHECKED(確認):
 黃炳秋

APPROVAL(核准):
 邓文广

GENERAL TOLERANCE:
 (公差)

.0 ±0.20
 .00 ±0.15

SCALE(比例):
 1:XX

REV:
A/3

UNIT:
 mm

SIZE:
A4

SHEET:
1/2

REV

1

2

3

4

DESCRIPTION

△此符號表示重點管控尺寸

圖面有修改

修改CAP外觀及尺寸ECN20161012-1

DATE

2008.05.23

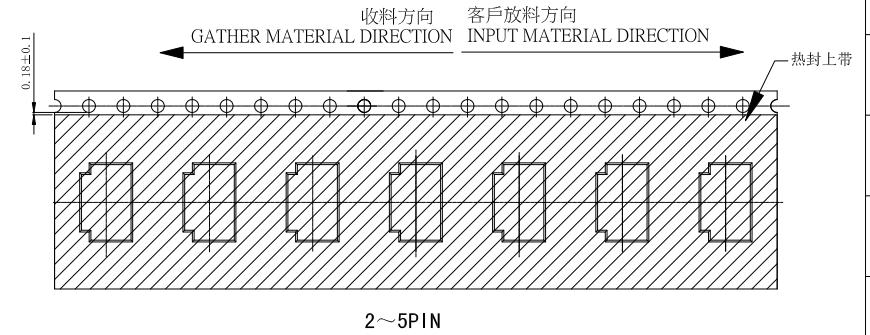
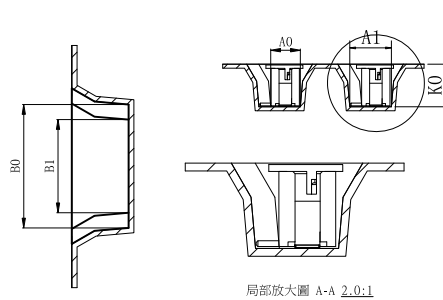
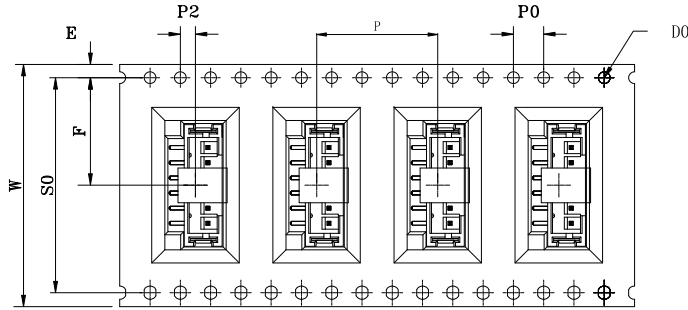
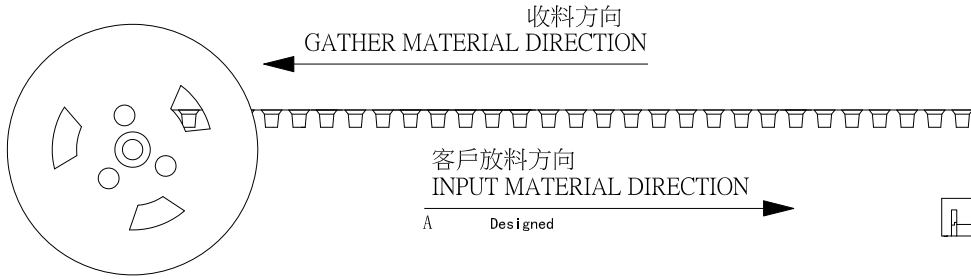
2008.09.23

2016.10.13

ITEM	A0	A1	K0	K1	P	E	D0	PO	P2
DIM	5.20 ^{+0.10} _{-0.10}	7.30 ^{+0.10} _{-0.10}	7.50 ^{+0.10} _{-0.10}	0.00 ^{+0.10} _{-0.10}	16.00 ^{+0.10} _{-0.10}	1.75 ^{+0.10} _{-0.10}	∅ 1.50 ^{+0.10} _{-0.00}	4.00 ^{+0.10} _{-0.10}	2.00 ^{+0.10} _{-0.10}

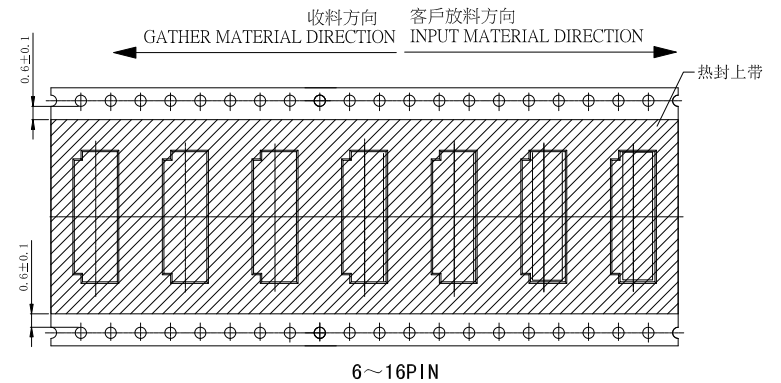
備注:

- 任意10個刺輪孔的累計誤差不超過+/-0.20mm.
- 材料:透明PS;打孔
- 載帶長度方向100mm距離的平行度不可超過1mm; 超過250mm不計算累計誤差.
- 非指明;公差範圍為+/-0.15mm
- Thickness :T±0.05mm.
- Packing length per 13" reel :8.60 Meters.
- Components load per 13" reel : 500 pcs.
- 每卷盤前空14穴, 后空10穴.



REEL 編號	PARTS NO.	Circuits	Dimension mm A(mm) B(mm)	Q'TY/Reel	載帶總寬(W) (mm)	空輪規格 (mm)	熱封上帶規格 (mm)
R20K2	CCP-W20-02-SMT-RC	02	2.0 8.0	500PCS	24	13X24 空標盤	21.3
R20K3	CCP-W20-03-SMT-RC	03	4.0 10.0	500PCS	24		
R20K4	CCP-W20-04-SMT-RC	04	6.0 12.0	500PCS	24		
R20K5	CCP-W20-05-SMT-RC	05	8.0 14.0	500PCS	24	13X32 空標盤	25.5
R20K6	CCP-W20-06-SMT-RC	06	10.0 16.0	500PCS	32		
R20K7	CCP-W20-07-SMT-RC	07	12.0 18.0	500PCS	32		
R20K8	CCP-W20-08-SMT-RC	08	14.0 20.0	500PCS	44	13X44 空標盤	37.5
R20K9	CCP-W20-09-SMT-RC	09	16.0 22.0	500PCS	44		
R20K10	CCP-W20-10-SMT-RC	10	18.0 24.0	500PCS	44		
R20K11	CCP-W20-11-SMT-RC	11	20.0 26.0	500PCS	44	13X56 空標盤	49.5
R20K12	CCP-W20-12-SMT-RC	12	22.0 28.0	500PCS	44		
R20K13	CCP-W20-13-SMT-RC	13	24.0 30.0	500PCS	44		
R20K14	CCP-W20-14-SMT-RC	14	26.0 32.0	500PCS	44	13X56 空標盤	49.5
R20K15	CCP-W20-15-SMT-RC	15	28.0 34.0	500PCS	56		
R20K16	CCP-W20-16-SMT-RC	16	30.0 36.0	500PCS	56		

Number of Contacts	W±0.3	F±0.15	B0±0.1	B1±0.1	S0±0.10	T±0.05	Q'TY/Reel	13"r (m)
02P	24	11.5	8.3	4.30	28.40	0.50	500Pcs	8.6
03P			10.3	6.30				
04P			12.3	8.30				
05P	32	14.2	14.3	10.3	40.40	0.40	500Pcs	8.6
06P			16.3	12.30				
07P			18.3	14.30				
08P	44	20.2	20.3	16.30	52.40	0.40	500Pcs	8.6
09P			22.3	18.30				
10P			24.3	20.30				
11P	56	26.2	26.3	22.30	52.40	0.40	500Pcs	8.6
12P			28.3	24.30				
13P			30.3	26.30				
14P	56	26.2	32.3	28.30	52.40	0.40	500Pcs	8.6
15P			34.3	30.30				
16P			36.3	32.30				



DESCRIPTION(內容):
2.0mm Wafer 180° SMT □ =0.50
REEL+CAP (RoHS)

PART NO:
(料 號) CCP-W20-XX-SMT-RC(包裝圖)
DWG NO(圖號):

DRAWN(製圖):
黃炳秋

CHECKED(確認):

APPROVAL(核准):

GENERAL TOLERANCE:
(公差)

.X .XXXX
.XX .X °
.XXX .XX °

SCALE(比例):
1:XX

REV:
A/4

UNIT:
mm

SIZE:
A4

SHEET:
2/2

REV

1

2

3

4

DESCRIPTION

卷盤不需真空袋包裝

添加尺寸

修改R20K5寬度W24, 新模

2008.08.14
2010.06.28
2011.05.18
2017.01.09