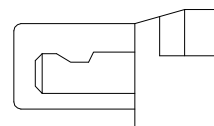


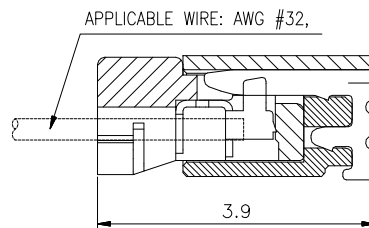
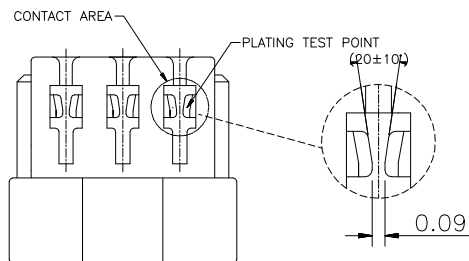
02-11 CONTACTS



12-24 CONTACTS

SPECIFICATIONS

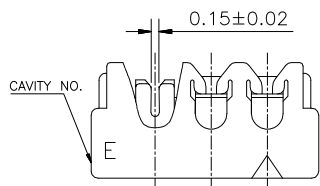
Current Rating :0.5A AC,DC
 Voltage Rating :30V AC,DC
 Temperature range :-25°C~+85°C
 Contact Resistance :20m Ω Max.
 Insulation Resistance :100M Ω Min.
 Withstanding Voltage :200VAC/minute
 Housing Material :High Temp UL94V-0 White
 Contact Material :Copper Alloy
 Contact Finish :Gold Flash.
 Applicable Wire :AWG #32 O.D.=0.38±0.02mm
 Reflow Solder Capable To 260°C



MATED CONDITION



CKT	DIM A	DIM B	DIM C
02	0.80	1.78	2.40
03	1.60	2.58	3.20
04	2.40	3.38	4.00
05	3.20	4.18	4.80
06	4.00	4.98	5.60
07	4.80	5.78	6.40
08	5.60	6.58	7.20
09	6.40	7.38	8.00
10	7.20	8.18	8.80
11	8.00	8.98	9.60
12	8.80	9.78	10.40
13	9.60	10.58	11.20
14	10.40	11.38	12.00
15	11.20	12.18	12.80
16	12.00	12.98	13.60
17	12.80	13.78	14.40
18	13.60	14.58	15.20
19	14.40	15.38	16.00
20	15.20	16.18	16.80
21	16.00	16.98	17.60
22	16.80	17.78	18.40
23	17.60	18.58	19.20
24	18.40	19.38	20.00



DESCRIPTION(内容):
 0.8mm 刺破 H:2.90 W:1.65 (RoHS)
 PART NO:
 (料 號) CC0800-H08 (IDC)-XX-CF438
 DWG NO(圖號):

DRAWN(製圖):
 Bingqiu Huang
 CHECKED(確認):
 Bingqiu Huang
 APPROVAL(核准):
 Bingqiu Huang

GENERAL TOLERANCE:
 (公差)
 .X ±0.25
 .XX ±0.15
 .XXX ±0.10
 SCALE(比例):
 1:XX

REV:	REV	DESCRIPTION	DATE
A/1	1		2022.03.02
UNIT:	2		
mm	3		
SIZE:	4		
A4			
SHEET:			
1/1			