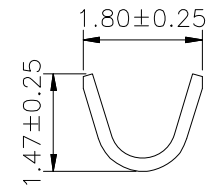
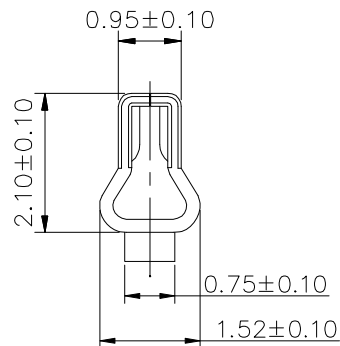


SEC:A-A



SEC:B-B



SPECIFICATIONS

Current Rating: 2A AC,DC
 Voltage Rating: 300V AC,DC
 Withstanding Voltage: 1000V AC/minute

Ordering Information & Specifications

Part No.	Wire Range	Insulation O.D.	Material	Finish	Qty/reel
CAE-T20	AWG#24-#28	1.50mm(max)	Phosphor Bronze	Tin-plated	10,000pcs

Note:e-Stamping before Tin-plated



DESCRIPTION(內容):	DRAWN(製圖):	GENERAL TOLERANCE: (公差)	REV:	REV	DESCRIPTION	DATE
			R1			
Pitch 2.0mm Terminal (RoHS)	Larry	.X ±0.25 .XX ±0.15 .XXX ±0.05	UNIT:	R0	RELEASE	2014.01.17
	CHECKED(確認):		mm	R1	更換確認章	2020.02.17
MANDY	SIZE:		A4	R2		
PART NO: (料號) CAE-T20	APPROVAL(核准):	SCALE(比例):	SHEET:	R3		
DWG NO(圖號): A2100-TPe	JOHNNY	FREE	1/1			